

基準点座標値

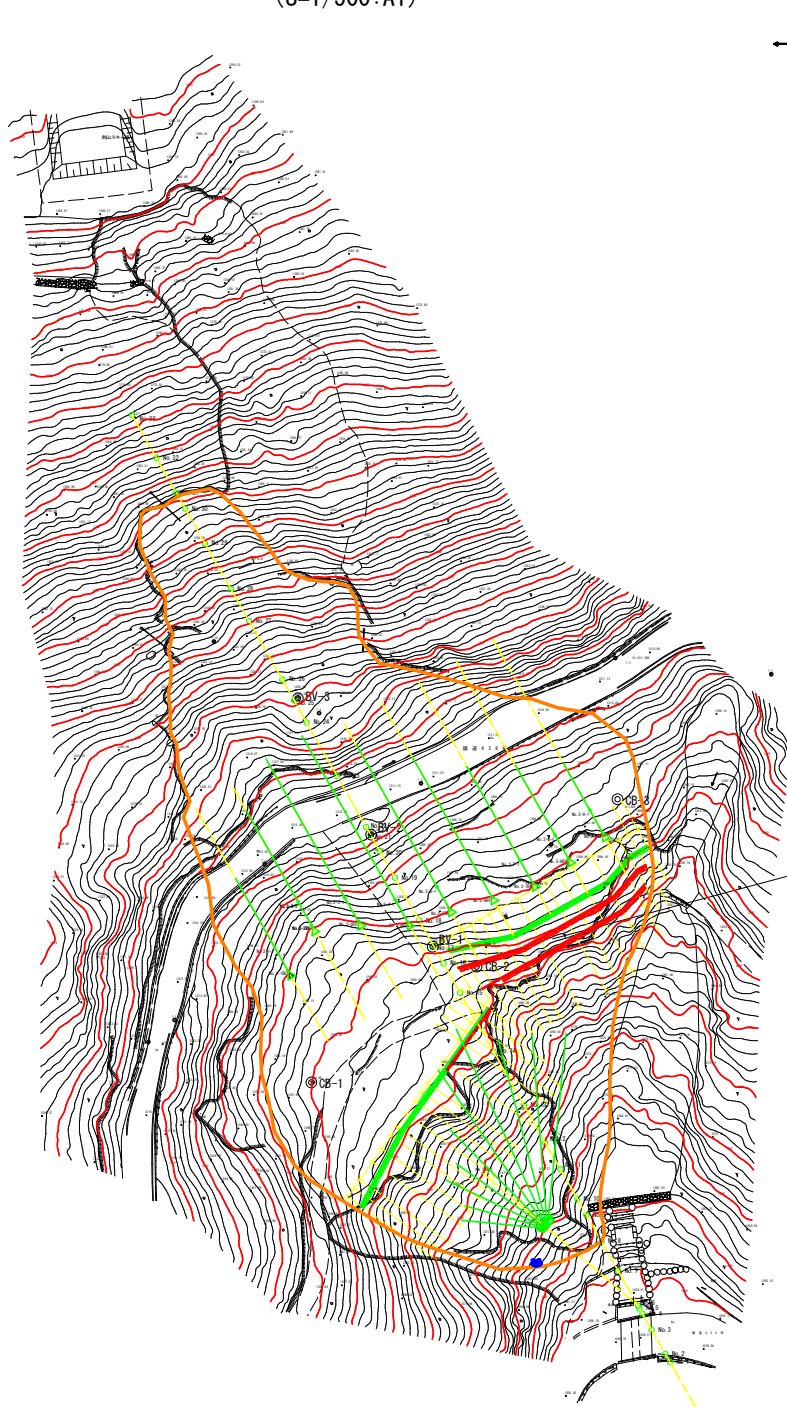
No.	X	Y	Z(標高)
T-1	97460.740	51115.397	1310.010
T-2	97457.685	51144.601	1311.000
T-3	97481.159	51180.978	1311.429
T-4	97496.222	51210.219	1312.597
T-5	97525.456	51227.091	1315.619
T-6	97529.581	51232.003	1315.816
T-7	97492.585	51156.602	1301.923
T-8	97506.123	51165.157	1298.107
T-9	97467.999	51200.049	1323.451
T-10	97454.599	51219.731	1336.131

平面図

(S=1/500:A1)

座標値

No.	X	Y	Z(標高)	Z(橋高)
No.1	97558.552	51194.642	1293.24	1293.410
No.2	97556.922	51193.484	1292.64	1292.639
No.3	97555.292	51192.325	1291.88	1291.118
No.4	97552.032	51190.007	1291.06	1291.220
No.5	97549.586	51188.269	1291.12	1291.273
No.6	97547.141	51186.531	1291.17	1291.170
No.7	97545.511	51185.373	1290.81	1290.966
No.8	97543.066	51183.635	1290.90	1291.108
No.9	97540.621	51181.897	1291.19	1291.328
No.10	97538.990	51180.738	1291.43	1291.608
No.11	97537.269	51179.759	1291.42	1291.670
No.12	97533.285	51176.682	1291.11	1291.294
No.13	97529.209	51173.786	1291.41	1291.537
No.13山崩控	97526.319	51177.852	1292.17	1292.418
No.14	97527.579	51172.827	1291.67	1291.834
No.14山崩控	97524.671	51176.681	1291.91	1292.213
No.15	97525.949	51171.468	1291.56	1291.685
No.15山崩控	97523.055	51175.540	1291.84	1291.992
No.16	97524.319	51170.310	1291.10	1291.254
No.16山崩控	97521.447	51174.351	1291.77	1292.069
No.17	97522.699	51169.151	1290.37	1291.047
No.17山崩控	97519.789	51173.231	1291.50	1291.699
No.18	97510.624	51176.850	1296.47	1296.576
No.19	97509.637	51175.111	1296.99	1296.992
No.20	97508.649	51173.372	1297.05	1297.294
No.21	97507.661	51171.633	1297.69	1298.007
No.22	97506.673	51169.894	1298.31	1298.455
No.23	97505.686	51168.155	1298.64	1298.726
No.24	97504.698	51166.416	1298.74	1298.846
No.25	97502.722	51162.938	1299.37	1299.530
No.26	97499.759	51157.720	1299.21	1299.376
No.27	97498.778	51155.112	1299.07	1299.245
No.28	97496.796	51152.503	1299.15	1299.285
No.29	97494.820	51149.025	1298.95	1299.099
No.30	97492.845	51145.547	1298.64	1298.642
No.30山崩控	97491.975	51146.041	1299.03	1299.374
No.31	97491.857	51143.808	1298.28	1298.464
No.32	97490.869	51142.069	1297.55	1297.550
No.32山崩控	97485.652	51145.032	1302.09	1302.251
No.33	97489.882	51140.330	1297.87	1297.870
No.33山崩控	97484.665	51143.293	1301.91	1302.091
No.1-1	97510.174	51178.291	1279.99	1280.285
No.2-1	97568.492	51177.206	1279.41	1279.609
No.3-1	97566.881	51176.020	1279.89	1280.089
No.4-1	97563.588	51173.749	1279.60	1279.738
No.5-1	97561.165	51171.978	1279.33	1279.477
No.6-1	97558.732	51170.224	1278.88	1279.121
No.7-1	97557.089	51169.065	1278.92	1279.111
No.8-1	97554.661	51167.322	1278.19	1278.488
No.9-1	97552.206	51165.595	1278.06	1278.305
No.10-1	97550.604	51164.399	1277.73	1277.929
No.11-1	97548.965	51163.251	1278.03	1278.276
No.12-1	97548.261	51160.359	1277.94	1278.238
No.13-1	97540.803	51157.475	1278.88	1279.128
No.14-1	97539.126	51156.379	1277.28	1277.476
No.15-1	97537.534	51155.169	1276.70	1276.901
No.16-1	97532.984	51158.105	1281.06	1281.261
No.17-1	97525.602	51185.053	1286.29	1286.511
No.18-1	97519.333	51171.903	1291.40	1291.623
No.19-1	97531.414	51162.742	1284.66	1284.905
No.20-1	97528.661	51162.005	1284.19	1284.395
No.21-1	97527.689	51160.258	1283.16	1283.360
No.22-1	97526.644	51158.551	1281.89	1282.109
No.23-1	97525.694	51156.791	1282.10	1282.298
No.24-1	97524.682	51155.077	1282.54	1282.828
No.25-1	97522.734	51151.571	1282.07	1282.266
No.26-1	97519.750	51146.366	1282.74	1282.539
No.27-1	97518.337	51143.719	1282.47	1282.636
No.28-1	97516.087	51141.546	1283.19	1283.590
No.29-1	97507.611	51141.760	1289.70	1289.899
No.30-1	97503.819	51139.314	1289.63	1289.910
No.31-1	97500.829	51138.712	1291.77	1292.073
No.32-1	97501.380	51136.099	1289.21	1289.307
No.33-1	97498.575	51135.393	1290.91	1291.029
No.1BV	97563.458	51158.486	1270.41	
No.1BV-1	97554.206	51169.354	1279.73	
No.2-BV	97516.202	51205.883	1300.15	1300.399
No.2-BV	97507.726	51201.487	1300.59	1300.821
No.2-BV	97506.955	51192.735	1300.10	1300.295
No.2-4BV	97507.300	51183.338	1299.61	1299.951
No.2-5BV	97504.920	51175.490	1299.71	1299.929
No.2-6BV	97502.489	51167.671	1299.82	1300.024
No.2-7BV	97499.868	51159.947	1299.86	1299.937
No.2-8BV	97495.208	51153.405	1299.95	1299.951
No.2-9BV	97490.531	51146.861	1299.95	1299.949
No.2-1-1	97511.854	51208.353	1302.94	1303.192
No.2-2-1	97503.378	51203.967	1304.22	1304.476
No.2-3-1	97502.607	51195.204	1303.44	1303.676
No.2-4-1	97502.953	51185.808	1303.14	1303.313
No.2-5-1	97500.572	51177.959	1301.83	1301.999
No.2-6-1	97498.141	51170.140	1301.39	1301.571
No.2-7-1	97495.540	51162.417	1302.00	1302.199
No.2-8-1	97490.861	51155.874	1302.21	1302.384
No.2-9-1	97488.184	51149.330	1302.37	1302.646



アンカー工:SSL-65CE(同等以上)
 設計アンカー力(Td=690kN)
 N=4 3本 2mピッチ 3段
 アンカー打設角度 水平-16.7°

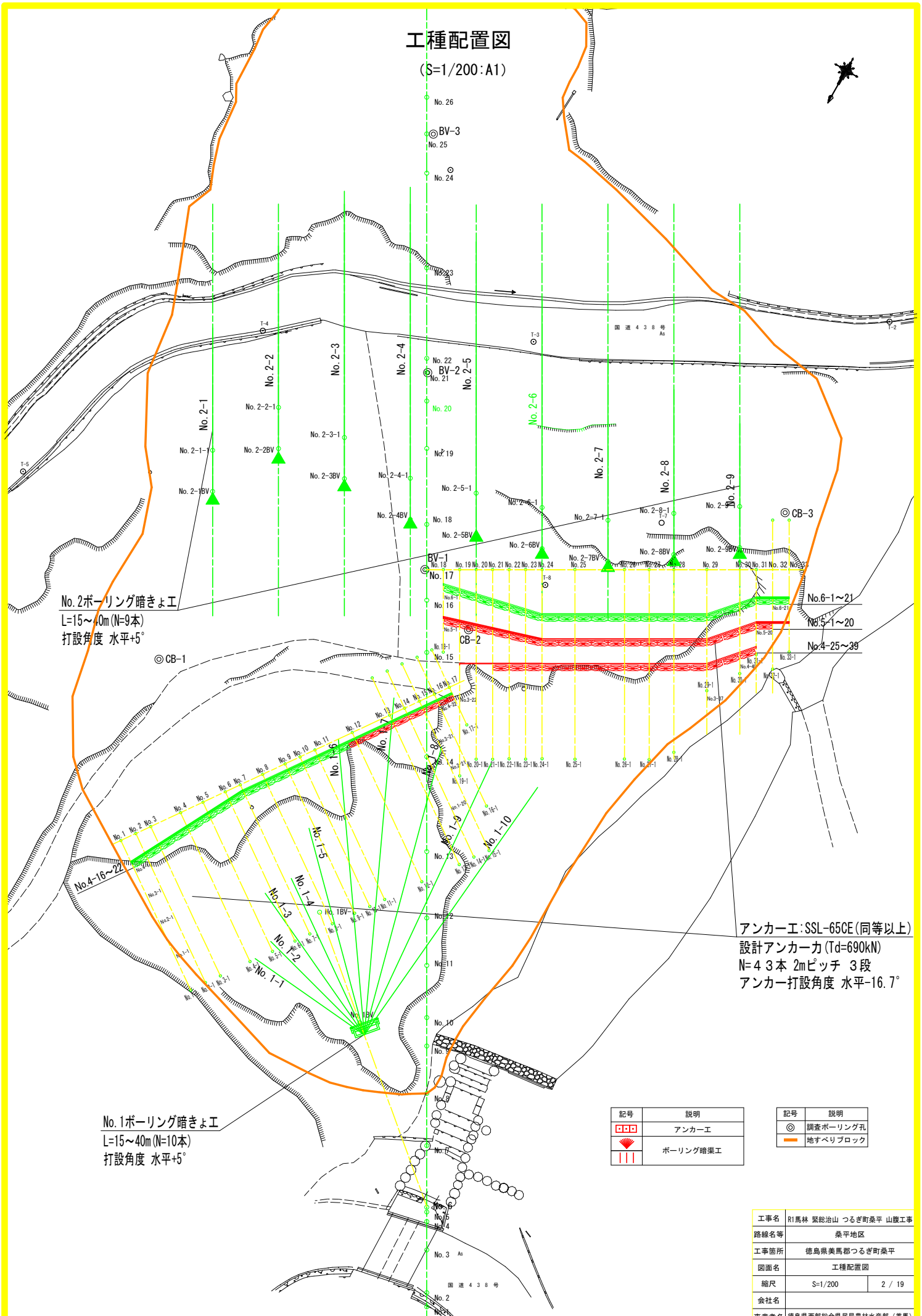
記号	説明
□	アンカー工
⊙	ボーリング暗渠工

記号	説明
⊙	調査ボーリング孔
⊙	湧水
—	地すべりブロック

工事名	R1馬林 繁総治山 つるぎ町桑平 山腹工事		
路線名等	桑平地区		
工事箇所	徳島県美馬郡つるぎ町桑平		
図面名	平面図		
縮尺	S=1/500	1 / 19	
会社名			
事業者名	徳島県西部総合県民局農林水産部(美馬)		

工種配置図

(S=1/200:A1)



No. 2ボーリング暗きょ工
L=15~40m (N=9本)
打設角度 水平+5°

◎ CB-1

No. 6-1~21
No. 5-1~20
No. 4-25~39

アンカー工: SSL-65CE (同等以上)
設計アンカー力 (Td=690kN)
N=4 3本 2mピッチ 3段
アンカー打設角度 水平-16.7°

No. 1ボーリング暗きょ工
L=15~40m (N=10本)
打設角度 水平+5°

記号	説明
□□□	アンカー工
▲	ボーリング暗渠工

記号	説明
◎	調査ボーリング孔
—	地すべりブロック

工事名	R1馬林 繁総治山 つるぎ町桑平 山腹工事		
路線名等	桑平地区		
工事箇所	徳島県美馬郡つるぎ町桑平		
図面名	工種配置図		
縮尺	S=1/200	2 / 19	
会社名			
事業者名	徳島県西部総合県民局農林水産部 (美馬)		